



Ma & Pa
Angus
BULL SALE

Monday, April 24, 2023

1:00 P.M. CST

Presho (SD) Livestock Auction



BULL SALE

Monday, April 24, 2023

1:00 pm CT

Presho Livestock Auction, Presho, SD

Join us for lunch beginning at 11:30 am CT

50 Registered Yearling Angus Bulls

Free Bull Delivery up to 200 miles

Inspection: Come to the ranch anytime before the sale. Call us at (605) 895-2203.

Bids: Can be left with Auctioneer or Ma & Pa Angus. All bids will be handled with the utmost integrity.

Terms & Conditions: All cattle sell according to the standard terms and conditions of the American Angus Association.

First Year Breeding Guarantee: All bulls selling for \$3,000 or more will be given 50% of the value of the injured bull, minus any salvage value, in a future sale or toward a replacement bull if one is available. All injured bulls must be diagnosed by a veterinarian. Please notify us as soon as possible should injury occur and prior to the injured animal being sold for salvage. All claims must be made by September 1, 2023.

Example 1: A \$5,000 bull is injured and will not heal. A credit for \$2,500 minus any salvage value will be given to the buyer.

Example 2: A \$2,500 bull is injured and will not heal. No credit is given. Buyer retains all salvage value.

Health: All bulls will pass a semen test before sale. The entire herd is on a complete vaccination program. A representative from the Animal Clinic, Winner, SD, will be at the sale – or call them at 1-800-808-8996.

Semen Interest: Ma & Pa Angus will retain a one-third semen interest in all registered bulls selling. Buyer owns full possession and salvage value.

VIDEOS AND SALE AVAILABLE ON



Catalog produced by:

RPI Promotions

Don Ravellette • (605) 685-5147

Beau Ravellette • (605) 685-8155

P.O. Box 788 • Philip, South Dakota 57567

www.rpipromotions.com



Announcements: Announcements from the block take precedence over any printed matter.

Bad Weather: Listen to KGFX 1060 AM if weather is threatening.

Liability: All persons who attend the sale do so at their own risk, and Ma & Pa Angus assumes no liability, legal or otherwise, for any accidents which may occur.

Sale Day Phone: Presho Livestock Auction (605) 895-2553;
Steve's Cell Phone: (605) 391-1450

Auctioneer: Zack Ballard (605) 999-3334

Livestock Press Representatives:

Rod Geppert, *American Angus Association* (605) 295-3673

Jeff Kapperman, *Tristate Neighbor* (605) 940-5104

Scott Dirk, *Farmer & Rancher Exchange,*

Tri-State Livestock News (605) 380-6024

Beau Ravellette, *RPI Promotions* (605) 685-8155

Don Ravellette, *RPI Promotions* (605) 685-5147

All bulls have been Angus GS tested



Deb & Steve Mowry

25340 River Road

Presho, SD 57568

(605) 895-2203

E-mail: smowry@kennebectelephone.com

WELCOME TO THE 26th ANNUAL Ma & Pa ANGUS BULL SALE!!

Exciting times here at Ma & Pa Angus..... and I'm to the age that I'm avoiding excitement! But in this case, it is a good thing. As Ma and I slow down the boys (young men) are gearing up, buying cattle, and making bigger decisions. The future looks bright, indeed. Together we work to bring you the soundest, most efficient group of breeding bulls to date. The testing and sorting is done and the best will be in Presho on Monday, April 24th.

All bulls have genomic enhanced EPDs by the Angus GS DNA test. They are also tested free of all known genetic defects and have already passed a semen/fertility examination.

Thank you for your interest in our program. If we can offer any information or assistance, feel free to contact us.

Sincerely, Steve, Deb, Sage, & Shilo



REFERENCE SIRES

Ma & Pa George G163

BD: 04/06/2019

Reg No: *19671999

Sinclair X-Changer 2FE9
Sinclair Piney Creek 6FV11
 Sinclair Eriskay 5E3 2N11

Ma & Pa Documentary W645
Ma & Pa Blackcap Lady 163Y
 Ma & Pa Blackcap Lady 845U

Sinclair Emulation 5522 XP
 Sinclair Blackie 7V3 2P18
 N Bar Explosion
 Sinclair Eriskay 2N11 7883

Ma & Pa Sequal R299
 Ma & Pa Eriskay 645S
 O C C Great Plains 943G
 Ma & Pa Blackcap Lady 554R



George's first progeny are impressive. He has the gentle temperament of the Piney Creek bull and the length of body of his Pathfinder dam. I would expect him to be an udder improver.

Trait	CED	BW	WW	YW	SC	Milk	Marb	RE	FAT	\$B
EPD	6	-0.6	58	105	0.84	24	0.40	0.29	0.028	114
ACC	.32	.58	.49	.45	.41	.12	.10	.16	.11	

Ma & Pa Tank F650

BD: 04/02/2018

Reg No: 19402774

Sinclair X-Changer 2FE9
Sinclair Piney Creek 6FV11
 Sinclair Eriskay 5E3 2N11

O C C Great Plains 943G
Ma & Pa Miss Wix 650S
 Ma & Pa Miss Wix 455P

Sinclair Emulation 5522 XP
 Sinclair Blackie 7V3 2P18
 N Bar Explosion
 Sinclair Eriskay 2N11 7883

N Bar Emulation EXT
 Dixie Erica of C H 1019
 Sitz Alliance 6595
 Gdar Miss Wix 8172



F650 has his sire's gentle temperament along with his excellent foot structure. We are extremely impressed with his young daughters. F650's dam finished her career with a weaning ratio of 12/106 and a calving interval of 13/365. She is maternal great granddaughter of Miss Wix 474-the mother of GDAR Game Day 449. F650's epd's continue to improve as we get more progeny. That's how we do it- PROVE 'EM!

Trait	CED	BW	WW	YW	SC	Milk	Marb	RE	FAT	\$B
EPD	4	1.1	51	91	.48	37	.25	.05	-0.006	89
ACC	.34	.64	.58	.55	.50	.16	.12	.17	.12	

Ma & Pa Black Cedar G650

BD: 04/04/2019

Reg No: 19672024

Cole Creek 1100 Black 452
Ma & Pa Black Cedar D902
 Ma & Pa Blackbird 902W

O C C Great Plains 943G
Ma & Pa Miss Wix 650S
 Ma & Pa Miss Wix 455P

Cole Creek Black Cedar 1100
 Cole Creek Juanadacap 50U
 HA Magic Maker 4300
 Ma & Pa Blackbird K011

N Bar Emulation EXT
 Dixie Erica of C H 1019
 Sitz Alliance 6595
 Gdar Miss Wix 8172

Trait	CED	BW	WW	YW	SC	Milk	Marb	RE	FAT	\$B
EPD	5	1.1	47	75	0.45	38	0.29	0.36	0.044	78
ACC	.23	.53	.47	.44	.46	.15	.11	.16	.11	

VDAR Maga 7370

BD: 01/22/2020

Reg No: 19706022

V D A R Cedar Wind 5126
V D A R Maga 3068
 V D A R Beauty 1672

G Bar Wulff Ext 8314
V D A R Miss Wix 7928
 V D A R Miss Wix 4330

V D A R Cedar Wind 8111
 V D A R Beauty 4321
 V D A R CS Emulation 846
 V D A R Beauty 9689

N Bar Emulation EXT
 Wulffs Erica Dianna C116
 V D A R Hero 7072
 VDAR Miss Wix 9626

Trait	CED	BW	WW	YW	SC	Milk	Marb	RE	FAT	\$B
EPD	9	1.8	49	94	0.70	19	0.57	-0.13	0.045	109
ACC	.32	.56	.49	.45	.47	.29	.31	.32	.28	

REFERENCE SIREs

Ma & Pa Tank H859

BD: 03/19/2020

Reg No: *19985496

|Sinclair Piney Creek 6FV11
Ma & Pa Tank F650
|Ma & Pa Miss Wix 650S

|Sinclair Emulation 4FX1
Ma & Pa Blackcap Lady 859F
|Ma & Pa Blackcap Lady 517C

Sinclair X-Changer 2FE9
Sinclair Eriskay 5E3 2N11
O C C Great Plains 943G
Ma & Pa Miss Wix 455P

Sinclair Emulation 0F4
Sinclair M Emulous 4ET1 D47
Sinclair Shadow Rider 9522
Ma & Pa Blackcap Lady 163Y

Trait	CED	BW	WW	YW	SC	Milk	Marb	RE	FAT	\$B
EPD	4	0.8	62	108	0.56	34	0.39	0.13	0.007	107
ACC	.23	.40	.34	.32	.14	.09	.06	.09	.06	



S A W Sonic Blast 071

BD: 03/22/2020

Reg No: *19897532

|DL Sonic 444
SAW Sonic Boom 865
|S A W Upward Lass 667

|S A V Resource 1441
S A W Miss Resource 674
|S A W Miss War Party 196

KG Solution 0018
DL Barbara 792
Sitz Upward 307R
S A W Aberdeen Lass 1189

Rito 707 of Ideal 3407 7075
S A V Blackcap May 4136
Werner War Party 2417
S A W Miss Regulator 9108

Trait	CED	BW	WW	YW	SC	Milk	Marb	RE	FAT	\$B
EPD	8	0.9	89	154	1.48	24	0.29	0.74	0.012	116
ACC	.36	.57	.50	.45	.48	.30	.38	.37	.35	



Ma & Pa Onward H848

BD: 03/05/2020

Reg No: *19985497

|Coleman Onward 511
LAR Onward 974F
|Blackbird Lass 958D 974 LAR

|Sinclair Warlord 4IJ4
Ma & Pa Blackbird 848F
|Ma & Pa Blackbird 463B

Connealy Onward
Coleman Donna 197
CAR Efficient 534
Blackbird Lass 908B LAR

Sinclair Emperor 0XT1
Sinclair Bkbird 7OC10 J472
Sinclair Shadow Rider 9522
Ma & Pa Blackbird 815U

Trait	CED	BW	WW	YW	SC	Milk	Marb	RE	FAT	\$B
EPD	4	0.5	54	92	.25	33	.56	.55	.033	128
ACC	.24	.38	.32	.27	.06	.08	.05	.08	.05	

Ma & Pa Fortitude G516

BD: 03/31/2019

Reg No: *19672031

|Sinclair Fortunate Son
Mc Cumber Fortunate 415
|Miss Wix 7126 of Mc Cumber

|Ma & Pa Emblazon 9112
Ma & Pa Eriskay 516C
|Ma & Pa Eriskay 147Y

Sinclair Emulate 7XT28
Sinclair Blackbird 2P8 7079
MC Cumber 004 Traveler 513
Miss Wix 413 of Mc Cumber

O C C Emblazon 854E
Ma & Pa Blackbird 112L
Ma & Pa Fear Not W435
C H Eriskay 8431

Trait	CED	BW	WW	YW	SC	Milk	Marb	RE	FAT	\$B
EPD	2	1.7	53	96	0.71	31	0.62	0.53	0.038	136
ACC	.23	.57	.51	.48	.44	.14	.09	.15	.10	

Lot
001

Ma & Pa In Focus K001

Reg No: 20614264

BD: 3/14/22

Act. BW	88	Black Pine Focus 6161	Mytty In Focus
Adj. WW	667	Sitz IN Focus 8058	J L S Favorite 749
Ratio	114	Sitz Barbaramere Jet 2643	Sitz Alliance 9800
Adj. YW	1075		Sitz Barbaramere Jet 1507
Scrotal	35.0		
ADG	3.80	Deep Creek Revolution 417	Connealy Reflection
Dam's NR		Ma & Pa Blackcap 001H	Deep Creek MaPa Lass 617
1@114		Ma & Pa Blackcap 057X	Ma & Pa Emblazon T359
			Ma & Pa Blackcap 811U

EPDs	CED	BW	WW	YW	Milk	Marb	RE	Fat
	+6	+0.9	+52	+90	+27	+0.23	+0.28	+0.050

• 3 Pathfinder Dams in the pedigree.
Weaned off young Revolution daughter at 114 NR. Grandam is the good 057 X cow that weaned 10 calves at 101 with calving interval of 367.



Lot
003

Ma & Pa Excellent K003

Reg No: 20614270

BD: 3/7/22

Act. BW	83	Sinclair Excellency 5X25	N Bar Emulation EXT
Adj. WW	583	Sinclair Excellent 9XE3	Ideal 4465 of 6807 4286
Ratio	100	Sinclair Enchantress 4P60	Sinclair Double X
Adj. YW	1052		N Bar Enchantress U138K
Scrotal	32.0		
ADG	4.36	Ma & Pa Black Cedar D902	Cole Creek 1100 Black 452
Dam's NR		Ma & Pa Mabel 003H	Ma & Pa Blackbird 902W
1@100		DR Mabel 0100	Sinclair Added Value 5PV44
			DR Mabel 9601

EPDs	CED	BW	WW	YW	Milk	Marb	RE	Fat
	+6	+2.1	+66	+116	+22	+0.33	+0.49	+0.014

Only Sinclair Excellent bull on the sale. His daughters ooze femininity and this Mable cow family is rich in material quality- going back to Dale Davis



Lot
009

Ma & Pa Encore K009

Reg No: 20614266

BD: 3/6/22

Act. BW	83	O C C Great Plains 943G	N Bar Emulation EXT
Adj. WW	663	Ma & Pa Feature Presentation	Dixie Erica of C H 1019
Ratio	114	Ma & Pa Blackbird 858M	Sitz Alliance 6595
Adj. YW	1148		Blackbird Lassie 319H L A R
Scrotal	41.0		
ADG	4.50	Sinclair Emulation 4FX1	Sinclair Emulation 0F4
Dam's NR		Ma & Pa Bandolier 009H	Sinclair M Emulous 4ET1 D47
1@114		Ma & Pa Bandolier 240Z	Ma & Pa Documentary W645
			Ma & Pa Bandolier 714T

EPDs	CED	BW	WW	YW	Milk	Marb	RE	Fat
	+4	+1.3	+52	+94	+26	+0.39	+0.59	+0.002

• 3 Pathfinder Dams in the pedigree.
We are pretty tight- fisted with our remaining semen supply of Ma and Pa Feature Presentation- a bull that has served Deep Creek Angus and us very well. Grandam is a Pathfinder and his dam calved early again this year! Weaned at 114 ratio, gained 4 ½ lbs/day to ratio 110 at yearling- with a 41 cm scrotal hanging on a 6.3 frame.



Ma & Pa Emblazon T359 - Sire of 031

Lot
031

Ma & Pa Emblazon K031

Reg No: 20614267

BD: 2/15/22

Act. BW	67	O C C Emblazon 854E	D H D Traveler 6807
Adj. WW	573	Ma & Pa Emblazon T359	Dixie Erica of C H 1019
Ratio	98	Ma & Pa Ms Copeland N359	N Bar Emulation EXT
Adj. YW	1039		MS Copeland 347C L A R
Scrotal	36.5		
ADG	4.33	Ma & Pa Executive Order D470	Sinclair Executive 9XV3
Dam's NR		Ma & Pa Hyalite 031H	Ma & Pa Miss 470B
1@98		Ma & Pa Hyalite 424B	Ox Bow Missing Link 1290
			Ox Bow Hyalite 218

EPDs	CED	BW	WW	YW	Milk	Marb	RE	Fat
	+13	-1.2	+45	+76	+21	+0.10	+0.04	+0.043

Emblazon T359 is an extremely consistent calving ease bull. This one held his own in the growth department- Safe for heifers!



Lot
039

Ma & Pa Revelation K039

Reg No: 20614268

BD: 3/11/22

Act. BW	67	Deep Creek Revolution 417	Connealy Reflection
Adj. WW	571	Ma & Pa Revelation H650	Deep Creek MaPa Lass 617
Ratio	98	Ma & Pa Miss Wix 650S	O C C Great Plains 943G
Adj. YW	1065		Ma & Pa Miss Wix 455P
Scrotal	37.0		
ADG	4.60	Sinclair Emulation 4FX1	Sinclair Emulation 0F4
Dam's NR		Ma & Pa Blackbird 039H	Sinclair M Emulous 4ET1 D47
1@98		Ma & Pa Blackbird 468B	Ma & Pa Handsom Jack W352
			Ma & Pa Blackbird 856U

EPDs	CED	BW	WW	YW	Milk	Marb	RE	Fat
	+12	-2.8	+45	+83	+25	+0.49	+0.10	+0.056

• 1 Pathfinder Dam in the pedigree.
Pedigree reads like a heifer bull and all the numbers point there too. Gentle disposition and a great gainer! Safe for heifers!



Ma & Pa Revelation H650 - Sire of 039

Lot
067

Ma & Pa Onward K067

Reg No: 20614265

BD: 4/3/22

Act. BW	71	LAR Onward 974F	Coleman Onward 511
Adj. WW	606	Ma & Pa Onward H848	Blackbird Lass 958D 974 LAR
Ratio	98	Ma & Pa Blackbird 848F	Sinclair Warlord 4IJ4
Adj. YW	1080		Ma & Pa Blackbird 463B
Scrotal	34.0		
ADG	4.41	Sinclair Emulation 4FX1	Sinclair Emulation 0F4
Dam's NR		Ma & Pa Blackbird 067H	Sinclair M Emulous 4ET1 D47
1@98		Ma & Pa Blackbird 632D	Ma & Pa Sequal X654
			Ox Bow Blackbird 290

EPDs	CED	BW	WW	YW	Milk	Marb	RE	Fat
	+12	-2.7	+51	+96	+35	+0.45	+0.54	+0.043

• 2 Pathfinder Dams in the pedigree.
Two Blackbird families teamed up to produce this big spread heifer bull. -2.8 BW to a +96 YW! Loads of maternal Angus genetics here- Safe for heifers

Lot
083

Ma & Pa Onward K083

Reg No: 20614288

BD: 3/18/22

Act. BW	88	LAR Onward 974F	Coleman Onward 511
Adj. WW	636	Ma & Pa Onward H848	Blackbird Lass 958D 974 LAR
Ratio	109	Ma & Pa Blackbird 848F	Sinclair Warlord 4IJ4
Adj. YW	1074		Ma & Pa Blackbird 463B
Scrotal	35.5		
ADG	4.08	Ma & Pa Executive Order D470	Sinclair Executive 9XV3
Dam's NR		Ma & Pa Eileen Diamond 083H	Ma & Pa Miss 470B
1@109		Eileenmere Diamond 593D LAR	LAR Rainmaker 127 773B
			Eileenmere Diamond 893W LAR

EPDs	CED	BW	WW	YW	Milk	Marb	RE	Fat
	-4	+3.1	+58	+99	+32	+0.33	+0.47	+0.028

• 2 Pathfinder Dams in the pedigree.
Expect some performance from this grandson of our Pick-of-the-Herd heifer from Littau Angus. (See Lot 6599).

Lot
097

Ma & Pa Onward K097

Reg No: 20614290

BD: 3/23/22

Act. BW	83	LAR Onward 974F	Coleman Onward 511
Adj. WW	627	Ma & Pa Onward H848	Blackbird Lass 958D 974 LAR
Ratio	100	Ma & Pa Blackbird 848F	Sinclair Warlord 4IJ4
Adj. YW	1088		Ma & Pa Blackbird 463B
Scrotal	36.5		
ADG	4.28	Ma & Pa Executive Order D470	Sinclair Executive 9XV3
Dam's NR		Ma & Pa Blackbird 097H	Ma & Pa Miss 470B
1@100		Ma & Pa Blackbird 7116E	Deep Creek Revolution 417
			Ma & Pa Blackbird 976W

EPDs	CED	BW	WW	YW	Milk	Marb	RE	Fat
	+4	+1.4	+65	+98	+29	+0.73	+0.43	+0.026

• 2 Pathfinder Dams in the pedigree.
This tight sheathed, good footed, son of Onward is out of a first calf heifer- His grandma is the Pathfinder dam of lot 7116. 097 cow calved right back early this year.

Lot
119

Ma & Pa Black Cedar K119

Reg No: 20614272

BD: 4/3/22

Act. BW	76	Ma & Pa Black Cedar D902	Cole Creek 1100 Black 452
Adj. WW	571	Ma & Pa Black Cedar G650	Ma & Pa Blackbird 902W
Ratio	93	Ma & Pa Miss Wix 650S	O C C Great Plains 943G
Adj. YW	950		Ma & Pa Miss Wix 455P
Scrotal	32.0		
ADG	3.58	Ma & Pa Steak Maker 9452	HA Magic Maker 4300
Dam's NR		Ma & Pa Rachel 119Y	Ma & Pa Queen 452P
10@97		Ma & Pa Rachel 540R	B C C Bushwacker 41-93
			Ma & Pa Rachel M283

EPDs	CED	BW	WW	YW	Milk	Marb	RE	Fat
	+13	-2.7	+27	+46	+32	+0.30	+0.01	+0.053

• 1 Pathfinder Dam in the pedigree.
Calving ease deluxe- 76lbs out of an 11-year-old cow with a calving interval 10/369

Lot
205

Ma & Pa Philp K205

Reg No: 20614273

BD: 4/7/22

Act. BW	109	Ma & Pa Tank F650	Sinclair Piney Creek 6FV11
Adj. WW	709	Ma & Pa Tank H859	Ma & Pa Miss Wix 650S
Ratio	115	Ma & Pa Blackcap Lady 859F	Sinclair Emulation 4FX1
Adj. YW	1237		Ma & Pa Blackcap Lady 517C
Scrotal	33.0		
ADG	4.91	Sinclair Emperor 0XT8	Sinclair Extra 4X13
Dam's NR		Ma & Pa Erica 205Z	Sinclair Blackbird 20F3 6417
9@102		Ma & Pa Erica 054X	S A V 8180 Traveler 004
			Ma & Pa Erica 751T

EPDs	CED	BW	WW	YW	Milk	Marb	RE	Fat
	+0	+2.8	+55	+100	+28	+0.44	+0.30	-0.023

• 2 Pathfinder Dams in the pedigree.
Powerful Tank son- gaining nearly 5lbs/day- Got to love his big-middled mama- Calving interval of 9/368 and one of the first cows to calve again this spring.



Ma & Pa Emulation H950 - Sire of 221



Lot
221

Ma & Pa Emblazon K221

Reg No: 20614274

BD: 3/29/22

Act. BW	86	Sinclair Emulation 4FX1	Sinclair Emulation 0F4
Adj. WW	642	Ma & Pa Emulation H950	Sinclair M Emulous 4ET1 D47
Ratio	104	Ma & Pa Blackbird 950W	HA Magic Maker 4300
Adj. YW	1103		Ma & Pa Blackbird 709T
Scrotal	40.5		
ADG	4.28	Ma & Pa Good Day W8172	Ma & Pa Feature Presentation
Dam's NR		Ma & Pa Forever Ruby 221Z	Gdar Miss Wix 8172
9@101		Ma & Pa Forever Ruby 542R	LAR Alliance 820M
			Forever Ruby 693C LAR

EPDs	CED	BW	WW	YW	Milk	Marb	RE	Fat
	+10	-0.3	+35	+68	+40	+0.31	+0.33	-0.006

• 1 Pathfinder Dam in the pedigree.
Nearly cried when the sire H950 died... and I don't cry easily! I'm comfortable with him on heifers as his eleven-year-old dam has never been assisted.



Lot
275

Ma & Pa Black Cedar K275

Reg No: 20614275

BD: 4/8/22

Act. BW	108	Ma & Pa Black Cedar D902	Cole Creek 1100 Black 452
Adj. WW	682	Ma & Pa Black Cedar G650	Ma & Pa Blackbird 902W
Ratio	111	Ma & Pa Miss Wix 650S	O C C Great Plains 943G
Adj. YW	1149		Ma & Pa Miss Wix 455P
Scrotal	37.0		
ADG	4.35	Ma & Pa Handsom Jack W352	S A V 8180 Traveler 004
Dam's NR		Ma & Pa Blackbird 275Z	Ma & Pa Forever Ruby N352
9@109		Ma & Pa Blackbird 976W	Sitz Alliance 6595
			Blackbird Lassie 319H LAR

EPDs	CED	BW	WW	YW	Milk	Marb	RE	Fat
	+1	+3.3	+54	+88	+36	+0.25	+0.28	+0.080

• 1 Pathfinder Dam in the pedigree.
Good things happen when you cross Great Plains with Alliance. This is one of them! Dam has 9/109 and calving interval of 9/366. Keep-every-heifer kind of bull.

Lot 290 **Ma & Pa Black Cedar K290**
 Reg No: 20614276 BD: 4/21/22

Act. BW	97	Ma & Pa Black Cedar D902	Cole Creek 1100 Black 452
Adj. WW	718	Ma & Pa Black Cedar G650	Ma & Pa Blackbird 902W
Ratio	116	Ma & Pa Miss Wix 650S	O C C Great Plains 943G
Adj. YW	1174		Ma & Pa Miss Wix 455P
Scrotal	36.5		
ADG	4.24	Redland Emblazon 2134	O C C Emblazon 854E
			Redland Henrietta Pride 1812
Dam's NR		Ox Bow Blackbird 290	WW Freightliner 6500
8@103		Ox Bow Blackbird 8176	Ox Bow Blackbird 687

EPDs	CED	BW	WW	YW	Milk	Marb	RE	Fat
	+1	+4.2	+59	+102	+24	+0.10	+0.47	-0.028

290 is out of probably the all-time favorite cow here. Deep, moderate sized, ease keeping, perfect uddered, and well mannered. Hopefully this Black Cedar son will produce females like his mama.

Lot 327 **Ma & Pa MAGA K327**
 Reg No: 20614277 BD: 4/9/22

Act. BW	108	V D A R Maga 3068	V D A R Cedar Wind 5126
Adj. WW	643	VDAR Maga 7370	V D A R Beauty 1672
Ratio	104	V D A R Miss Wix 7928	G Bar Wulff Ext 8314
Adj. YW	1166		V D A R Miss Wix 4330
Scrotal	36.5		
ADG	4.87	Ma & Pa Good Day Y859	Ma & Pa Good Day W8172
		Ma & Pa Blackcap 327A	Eileens Revolution 559H LAR
Dam's NR		Ma & Pa Blackcap 186Y	Sinclair Excellent 9XE3
8@108			Ma & Pa Blackcap 974W

EPDs	CED	BW	WW	YW	Milk	Marb	RE	Fat
	+3	+5.2	+60	+101	+25	+0.25	+0.12	-0.008

• 1 Pathfinder Dam in the pedigree.
 Performance on the hoof! Doesn't matter what we breed this cow to- it POPS! This fast-gaining MAGA son is my favorite. This cow has never been in a headgate at calving time. Use him on cows and reap the rewards.

Lot 365 **Ma & Pa Fortitude K365**
 Reg No: 20614279 BD: 3/20/22

Act. BW	96	Mc Cumber Fortunate 415	Sinclair Fortunate Son
Adj. WW	611	Ma & Pa Fortitude G516	Miss Wix 7126 of Mc Cumber
Ratio	99	Ma & Pa Eriskay 516C	Ma & Pa Emblazon 9112
Adj. YW	1118		Ma & Pa Eriskay 147Y
Scrotal	36.0		
ADG	4.72	Ma & Pa Handsom Jack W352	S A V 8180 Traveler 004
		Ma & Pa Miss Wix 365A	Ma & Pa Forever Ruby N352
Dam's NR		Ma & Pa Miss Wix 834U	O C C Great Plains 943G
8@100			Ma & Pa Miss Wix 455P

EPDs	CED	BW	WW	YW	Milk	Marb	RE	Fat
	+7	+0.9	+45	+74	+27	+0.48	+0.49	+0.062

• 1 Pathfinder Dam in the pedigree.
 When Eriskay and Miss Wix families collided in our herd, maternal things are going to happen Lot of favorite cows here.



Lot 359 **Ma & Pa MAGA K359**
 Reg No: 20614278 BD: 4/4/22

Act. BW	104	V D A R Maga 3068	V D A R Cedar Wind 5126
Adj. WW	625	VDAR Maga 7370	V D A R Beauty 1672
Ratio	101	V D A R Miss Wix 7928	G Bar Wulff Ext 8314
Adj. YW	1113		V D A R Miss Wix 4330
Scrotal	37.0		
ADG	4.54	S Game Day 0218	GDAR Game Day 449
		Ma & Pa Elegance 359A	S Blackbird 0111
Dam's NR		Ma & Pa Elegance 808U	Sitz Alliance 6595
6@101			Ma & Pa Elegance 118L

EPDs	CED	BW	WW	YW	Milk	Marb	RE	Fat
	+8	+1.9	+39	+71	+19	+0.39	-0.10	+0.094

Nicely balanced MAGA son with some easy keeping, beautiful cows on the bottom side of the pedigree.





Lot
409

Ma & Pa Tank K409

Reg No: 20614280

BD: 4/3/22

Act. BW	81	Sinclair Piney Creek 6FV11	Sinclair X-Changer 2FE9					
Adj. WW	677	Ma & Pa Tank F650	Sinclair Eriskay 5E3 2N11					
Ratio	110	Ma & Pa Miss Wix 650S	O C C Great Plains 943G					
Adj. YW	1170		Ma & Pa Miss Wix 455P					
Scrotal	35.5							
ADG	4.58	Sinclair Excellent 9XE3	Sinclair Excellency 5X25					
Dam's NR		Ma & Pa Blackcap 409B	Sinclair Enchantress 4P60					
7@106		DR Blackcap 093	Sinclair Added Value 5PV44					
			DR Blackcap 2228					
EPDs	CED	BW	WW	YW	Milk	Marb	RE	Fat
	+9	+0.9	+54	+90	+32	+0.26	+0.15	+0.001

• 3 Pathfinder Dams in the pedigree.
We have a lot F650 daughters and just love'em. To avoid breeding his sisters we have elected to sell him... but don't really want to. If you're keeping daughters here's your bull. Beautiful Pathfinder dam and grandam. Safe for heifers.



Lot
416

Ma & Pa George K416

Reg No: 20614281

BD: 4/6/22

Act. BW	81	Sinclair Piney Creek 6FV11	Sinclair X-Changer 2FE9					
Adj. WW	625	Ma & Pa George G163	Sinclair Eriskay 5E3 2N11					
Ratio	101	Ma & Pa Blackcap Lady 163Y	Ma & Pa Documentary W645					
Adj. YW	1071		Ma & Pa Blackcap Lady 845U					
Scrotal	34.5							
ADG	4.16	Sinclair Emperor 0XT8	Sinclair Extra 4X13					
Dam's NR		Ma & Pa Blackcap 416B	Sinclair Blackbird 20F3 6417					
5@101		Ma & Pa Blackcap 185Y	Sinclair Excellent 9XE3					
			Ma & Pa Blackcap 970W					
EPDs	CED	BW	WW	YW	Milk	Marb	RE	Fat
	+10	-1.3	+39	+69	+26	+0.45	-0.16	+0.057

• 2 Pathfinder Dams in the pedigree.
Calving ease bull from our rising star, George G163.



Lot
454

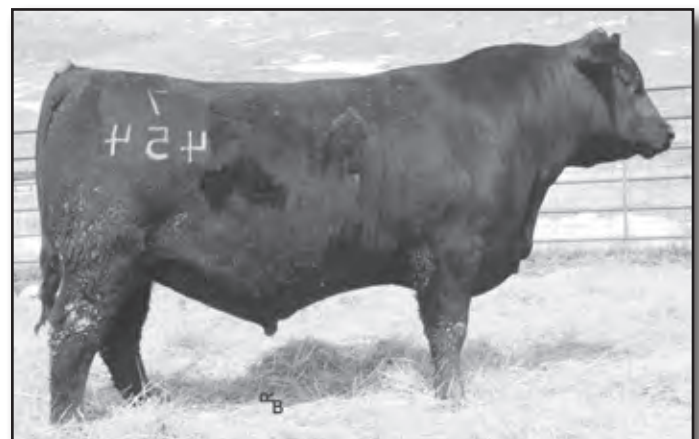
Ma & Pa Tank K454

Reg No: 20614282

BD: 4/3/22

Act. BW	98	Sinclair Piney Creek 6FV11	Sinclair X-Changer 2FE9					
Adj. WW	646	Ma & Pa Tank F650	Sinclair Eriskay 5E3 2N11					
Ratio	105	Ma & Pa Miss Wix 650S	O C C Great Plains 943G					
Adj. YW	1134		Ma & Pa Miss Wix 455P					
Scrotal	38.0							
ADG	4.54	Ma & Pa Handsom Jack W352	S A V 8180 Traveler 004					
Dam's NR		Ma & Pa Merle 454B	Ma & Pa Forever Ruby N352					
7@104		Ma & Pa Merle 708T	O C C Great Plains 943G					
			Ma & Pa Merle 110L					
EPDs	CED	BW	WW	YW	Milk	Marb	RE	Fat
	+0	+3.0	+56	+98	+34	-0.14	+0.17	+0.004

• 3 Pathfinder Dams in the pedigree.
Powerful yearling bull with several Pathfinder cows in the pedigree.



Maternal Brother to K454

Lot
471

Ma & Pa George K471

Reg No: 20614283

BD: 3/28/22

Act. BW	80	Sinclair Piney Creek 6FV11	Sinclair X-Changer 2FE9
Adj. WW	621	Ma & Pa George G163	Sinclair Eriskay 5E3 2N11
Ratio	101	Ma & Pa Blackcap Lady 163Y	Ma & Pa Documentary W645
Adj. YW	1104		Ma & Pa Blackcap Lady 845U
Scrotal	36.5		
ADG	4.49	S Game Day 0218	GDAR Game Day 449
			S Blackbird 0111
Dam's NR		Ma & Pa Blackbird 471B	HA Magic Maker 4300
7@105		Ma & Pa Blackbird 902W	Ma & Pa Blackbird K011

EPDs	CED	BW	WW	YW	Milk	Marb	RE	Fat
	+9	-1.3	+50	+96	+25	+0.33	+0.34	+0.075

• 3 Pathfinder Dams in the pedigree.
Really excited to see more of the George offspring. The first bred heifers were terrific this year. This bull is also out of a Pathfinder dam. Safe for heifers.



Lot
488

Ma & Pa Tank K488

Reg No: 626876343

BD: 4/2/22

Act. BW	92	Ma & Pa Tank F650	Sinclair Piney Creek 6FV11
Adj. WW	708	Ma & Pa Tank H859	Ma & Pa Miss Wix 650S
Ratio	119	Ma & Pa Blackcap Lady 859F	Sinclair Emulation 4FX1
Adj. YW	1204		Ma & Pa Blackcap Lady 517C
Scrotal	36.5		
ADG	4.61	S Game Day 0218	GDAR Game Day 449
			S Blackbird 0111
Dam's NR		Ma & Pa 488	Magic Maker 4300
6@103		Ma & Pa 1115	Ma & Pa 695

EPDs	CED	BW	WW	YW	Milk	Marb	RE	Fat
	-	-	-	-	-	-	-	-

• 2 Pathfinder Dams in the pedigree.
Great muscle expression in this top rationing bull... Easy to find in the pen.

Lot
509

Ma & Pa George K509

Reg No: 20614284

BD: 4/2/22

Act. BW	82	Sinclair Piney Creek 6FV11	Sinclair X-Changer 2FE9
Adj. WW	641	Ma & Pa George G163	Sinclair Eriskay 5E3 2N11
Ratio	104	Ma & Pa Blackcap Lady 163Y	Ma & Pa Documentary W645
Adj. YW	1094		Ma & Pa Blackcap Lady 845U
Scrotal	34.0		
ADG	4.20	Ma & Pa Emblazon 9112	O C C Emblazon 854E
			Ma & Pa Blackbird 112L
Dam's NR		Ma & Pa Blackcap Lady 509C	HA Magic Maker 4300
6@97		Ma & Pa Blackcap Lady 102Y	Ma & Pa Blackcap Lady K022

EPDs	CED	BW	WW	YW	Milk	Marb	RE	Fat
	+11	-1.6	+44	+73	+25	+0.37	-0.03	+0.022

• 3 Pathfinder Dams in the pedigree.
Safe for heifers but still has some good frame, something special here!



What is a Pathfinder?

1. To qualify initially, a cow must have produced at least three calves, with an average weaning ratio of 105, and these calves must have been evaluated with at least nine other herd mates.
2. Beginning with her first calf, all calves must have been recorded in AHIR. No irregular weanings or calves by commercial sires are used in this analysis.
3. A cow must have had her first calf at an age equal to or less than the average age of the herd at first calving, plus 30 days.
4. To qualify for subsequent listings in the Pathfinder report, she must maintain a regular calving interval, which is determined as follows

$$\frac{30}{\text{Number of Calving Intervals}} + 365 = \text{Maximum Calving Interval}$$

**SALE
FEATURE**



Lot 517 Ma & Pa Sonic Blast K517
Reg No: 20614285 BD: 4/3/22

Act. BW	90	SAW Sonic Boom 865	DL Sonic 444
Adj. WW	660	S A W Sonic Blast 071	SA W Upward Lass 667
Ratio	107	SA W Miss Resource 674	SA V Resource 1441
Adj. YW	1225		SA W Miss War Party 196
Scrotal	40.5		
ADG	5.25	Sinclair Shadow Rider 9S22	N Bar Shadow X4124
Dam's NR	6@108	Ma & Pa Blackcap Lady 517C	Sinclair Lady 3R1 4465
		Ma & Pa Blackcap Lady 163Y	Ma & Pa Documentary W645
			Ma & Pa Blackcap Lady 845U

EPDs	CED	BW	WW	YW	Milk	Marb	RE	Fat
	+7	-0.1	+68	+120	+32	+0.35	+0.57	+0.024

• 2 Pathfinder Dams in the pedigree.
Weaned off his Pathfinder dam to ratio 107 and gained a whopping 5.25 pounds per day to ratio 113 at yearling. His Pathfinder Grandam is also the dam to Ma & Pa George G163, our rising Senior herd sire. EPD's say calving ease, but really should be used on cows with a 6.7 yearling frame score. Robert Calkins purchased the top selling maternal brother to this bull in 2020. We miss those phone calls.



Lot 533 Ma & Pa George K533
Reg No: 20614286 BD: 3/22/22

Act. BW	83	Sinclair Piney Creek 6FV11	Sinclair X-Changer 2FE9
Adj. WW	598	Ma & Pa George G163	Sinclair Eriskay 5E3 2N11
Ratio	97	Ma & Pa Blackcap Lady 163Y	Ma & Pa Documentary W645
Adj. YW	1030		Ma & Pa Blackcap Lady 845U
Scrotal	36.0		
ADG	4.02	Ma & Pa X654 Sequal A353	Ma & Pa Sequal X654
Dam's NR	5@101	Ma & Pa Lady Ida 533C	Ma & Pa Polly Anna N353
		Sinclair Lady Ida 3V18 0JP29	N Bar Emulation Ext A1747
			Sinclair Lady Ida 0JP29 8S5

EPDs	CED	BW	WW	YW	Milk	Marb	RE	Fat
	+7	-0.5	+49	+83	+15	+0.42	+0.15	+0.019

• 2 Pathfinder Dams in the pedigree.
Calving ease bull be George. Calving interval of 6/368.





Lot 562 **Ma & Pa MAGA K562**
 Reg No: 20614287 BD: 3/19/22

Act. BW	97	V D A R Maga 3068	V D A R Cedar Wind 5126
Adj. WW	654	VDAR Maga 7370	V D A R Beauty 1672
Ratio	106	V D A R Miss Wix 7928	G Bar Wulff Ext 8314
Adj. YW	1169	V D A R Miss Wix 4330	V D A R Miss Wix 4330
Scrotal	35.5		
ADG	4.79	Ma & Pa Emblazon 9112	O C C Emblazon 854E
Dam's NR	6@102	Ma & Pa Blackbird 562C	Ma & Pa Blackbird 112L
		Ma & Pa BLaackbird 756T	Sitz Alliance 6595
			C H Blackbird 8456

EPDs	CED	BW	WW	YW	Milk	Marb	RE	Fat
	+8	+0.3	+49	+85	+25	+0.65	+0.05	+0.023

• 1 Pathfinder Dam in the pedigree.
 Bigger framed MAGA son that walks the walk.



Lot 607 **Ma & Pa Sonic Blast K607**
 Reg No: 20614308 BD: 3/23/22

Act. BW	92	SAW Sonic Boom 865	DL Sonic 444
Adj. WW	651	S A W Sonic Blast 071	S A W Upward Lass 667
Ratio	106	S A W Miss Resource 674	S A V Resource 1441
Adj. YW	1096		S A W Miss War Party 196
Scrotal	36.0		
ADG	4.14	Cole Creek 1100 Black 452	Cole Creek Black Cedar 1100
Dam's NR	5@97	Ma & Pa Banmere 607D	Cole Creek Juanadacap 50U
		Ma & Pa Banmere 112Y	Ma & Pa Steak Maker 9452
			Ma & Pa Banmere 426P

EPDs	CED	BW	WW	YW	Milk	Marb	RE	Fat
	+7	+1.0	+64	+102	+16	+0.28	+0.30	+0.051

Nice long- bodied, strong topped, Sonic blast son.



Lot
634

Ma & Pa Fortitude K634

Reg No: 20614309

BD: 3/22/22

Act. BW	77	Mc Cumber Fortunate 415	Sinclair Fortunate Son
Adj. WW	592	Ma & Pa Fortitude G516	Miss Wix 7126 of Mc Cumber
Ratio	96	Ma & Pa Eriskay 516C	Ma & Pa Emblazon 9112
Adj. YW	1054	Ma & Pa Eriskay 147Y	Ma & Pa Eriskay 147Y
Scrotal	37.5	Sinclair Prairie Chief 4G7	Sinclair Grass Master
ADG	4.30	Ma & Pa Blackcap Lady 634D	Sinclair K Bty 0A3 7XT55
Dam's NR	5@98	Ma & Pa Blackcap Lady 302A	Sinclair Shadow Rider 9S22
			Ma & Pa Blackcap Lady 015X

EPDs	CED	BW	WW	YW	Milk	Marb	RE	Fat
	+8	-1.1	+49	+81	+30	+0.17	+0.63	+0.008

• 1 Pathfinder Dam in the pedigree.
A fortitude son out of a true calving ease cow with a negative BW EPD. She has a calving interval of 5/363 and calved first week this year. Safe for heifers.



Lot
647

Ma & Pa Philp K647

Reg No: 20614310

BD: 3/31/22

Act. BW	89	Ma & Pa Tank F650	Sinclair Piney Creek 6FV11
Adj. WW	704	Ma & Pa Tank H859	Ma & Pa Miss Wix 650S
Ratio	114	Ma & Pa Blackcap Lady 859F	Sinclair Emulation 4FX1
Adj. YW	1146	Sinclair Emperor 0XT8	Ma & Pa Blackcap Lady 517C
Scrotal	37.0	Ma & Pa Bon Chloe 647D	Sinclair Extra 4X13
ADG	4.11	Ma Pa Bon Chloe 344A	Sinclair Blackbird 20F3 6417
Dam's NR	5@107		Ma & Pa Handsom Jack W352
			Ma & Pa Bon Chloe 624S

EPDs	CED	BW	WW	YW	Milk	Marb	RE	Fat
	+4	+0.4	+62	+106	+32	+0.52	+0.01	+0.031

• 5 Pathfinder Dams in the pedigree.
Don't miss this one. Dam, grandam, and great grandam are all pathfinders! Fertility and performance run deep in this cow family. Udders have all been excellent.



Lot
688

Ma & Pa MAGA K688

Reg No: 20614311

BD: 3/22/22

Act. BW	100	V D A R Maga 3068	V D A R Cedar Wind 5126
Adj. WW	693	VDAR Maga 7370	V D A R Beauty 1672
Ratio	112	V D A R Miss Wix 7928	G Bar Wulff Ext 8314
Adj. YW	1295	Sinclair Emperor 0XT8	V D A R Miss Wix 4330
Scrotal	38.0	Ma & Pa Blackbird 688D	Sinclair Extra 4X13
ADG	5.59	Ma & Pa Blackbird 715T	Sinclair Blackbird 20F3 6417
Dam's NR	5@104		RR 0415 Image 3350
			Ma & Pa Blackbird 858M

EPDs	CED	BW	WW	YW	Milk	Marb	RE	Fat
	+0	+4.5	+72	+134	+24	+0.69	+0.36	+0.062

• 3 Pathfinder Dams in the pedigree.
This MAGA son/stud was the heaviest yearling weight bull of the group- winning the feed test at 5.59 pounds a day! His dam, grandam, and great grandam are all Pathfinders. His Great Grandam is the dam to Ma & Pa Feature Presentation.



Lot
703

Ma & Pa George K703

Reg No: 20614289

BD: 4/1/22

Act. BW	93	Sinclair Piney Creek 6FV11	Sinclair X-Changer 2FE9
Adj. WW	606	Ma & Pa George G163	Sinclair Eriskay 5E3 2N11
Ratio	98	Ma & Pa Blackcap Lady 163Y	Ma & Pa Documentary W645
Adj. YW	1020	Ma & Pa Lumber Jack B543	Ma & Pa Blackcap Lady 845U
Scrotal	40.5	Ma & Pa Blackbird 703E	Ma & Pa Handsom Jack W352
ADG	3.86	Ma & Pa Blackbird 042X	Ma & Pa Eileenmere 543R
Dam's NR	3@101		O C C Great Plains 943G
			Ma & Pa Blackbird 715T

EPDs	CED	BW	WW	YW	Milk	Marb	RE	Fat
	+4	+0.5	+45	+77	+26	+0.46	+0.12	+0.040

• 5 Pathfinder Dams in the pedigree.
Same cow family as the powerful lot 688. 3 consecutive Pathfinders below his dam- going to the Dam of Feature Presentation.





Lot
757

Ma & Pa Sonic Blast K757

Reg No: 20614291

BD: 3/25/22

Act. BW	80
Adj. WW	553
Ratio	90
Adj. YW	1111
Scrotal	38.0
ADG	5.20

SAW Sonic Boom 865
S A W Sonic Blast 071
S A W Miss Resource 674

DL Sonic 444
S A W Upward Lass 667
S A V Resource 1441
S A W Miss War Party 196

Dam's NR
4@93

Sinclair Emulation 4FX1
Ma & Pa Eileenmere 757E
Ma & Pa Eileenmere 413B

Sinclair Emulation 0F4
Sinclair M Emulous 4ET1 D47
S Game Day 0218
Ma & Pa Eileenmere 124Y

EPDs	CED	BW	WW	YW	Milk	Marb	RE	Fat
	+12	-2.3	+54	+100	+32	+0.32	+0.42	+0.053

• 1 Pathfinder Dam in the pedigree.
Well built calving ease bull with a great EPD spread. Gained over 5 pounds a day!



Lot
769

Ma & Pa Sonic Blast K769

Reg No: 20614292

BD: 3/25/22

Act. BW	117
Adj. WW	700
Ratio	113
Adj. YW	1193
Scrotal	35.5
ADG	4.58

SAW Sonic Boom 865
S A W Sonic Blast 071
S A W Miss Resource 674

DL Sonic 444
S A W Upward Lass 667
S A V Resource 1441
S A W Miss War Party 196

Dam's NR
4@111

Ma & Pa BEHOLD B537
Ma & Pa Miss Wix 769E
Ma & Pa Miss Wix 466B

Ma & Pa Handsom Jack W352
Ma & Pa Eriskay 537R
Sinclair Shadow Rider 9S22
Ma & Pa Miss Wix 834U

EPDs	CED	BW	WW	YW	Milk	Marb	RE	Fat
	-6	+4.0	+71	+119	+36	+0.59	+0.74	+0.010

• 1 Pathfinder Dam in the pedigree.
Perhaps the longest bodied bull in the offering and out of a Pathfinder dam, His Miss Wix dam goes directly back to the dam of GDAR Game Day 449. He'll make some terrific calves.





Lot
793

Ma & Pa MAGA K793

Reg No: 20614293

BD: 3/31/22

Act. BW	93	V D A R Maga 3068	V D A R Cedar Wind 5126
Adj. WW	689	VDAR Maga 7370	V D A R Beauty 1672
Ratio	112	V D A R Miss Wix 7928	G Bar Wulff Ext 8314
Adj. YW	1183		V D A R Miss Wix 4330
Scrotal	36.0		
ADG	4.60	Ma & Pa 0218 Game Day A430	S Game Day 0218
Dam's NR	4@100	Ma & Pa Blackbird 793E	Ma & Pa Elba Bandolier 430P
		Ma & Pa Blackbird 643S	O C C Emblazon 854E
			Ma & Pa Blackbird 431P

EPDs	CED	BW	WW	YW	Milk	Marb	RE	Fat
	+7	+2.1	+52	+101	+28	+0.36	+0.17	+0.070

The MAGA bull worked well for us! This guy ratioed 112 at weaning, 109 at yearling, and gained 4.60 pounds a day. His mama has an excellent udder so you can keep the females!

Lot
801

Ma & Pa Tank K801

Reg No: 20614294

BD: 3/31/22

Act. BW	73	Sinclair Piney Creek 6FV11	Sinclair X-Changer 2FE9
Adj. WW	578	Ma & Pa Tank F650	Sinclair Eriskay 5E3 2N11
Ratio	94	Ma & Pa Miss Wix 650S	O C C Great Plains 943G
Adj. YW	949		Ma & Pa Miss Wix 455P
Scrotal	35.5		
ADG	3.45	Sinclair Emulation 4FX1	Sinclair Emulation 0F4
Dam's NR	3@101	Ma & Pa Bandolier 801F	Sinclair M Emulous 4ET1 D47
		Ma & Pa Bandolier 022X	Sinclair Picasso
			Ma & Pa Bandolier 541R

EPDs	CED	BW	WW	YW	Milk	Marb	RE	Fat
	+8	-1.7	+38	+65	+32	+0.38	+0.33	+0.014

• 3 Pathfinder Dams in the pedigree.
Great calving ease bull- and she's got another one on the White River hills right under her chin. Safe for heifers.

Lot
824

Ma & Pa George K824

Reg No: 20614295

BD: 4/1/22

Act. BW	70	Sinclair Piney Creek 6FV11	Sinclair X-Changer 2FE9
Adj. WW	587	Ma & Pa George G163	Sinclair Eriskay 5E3 2N11
Ratio	95	Ma & Pa Blackcap Lady 163Y	Ma & Pa Documentary W645
Adj. YW	1043		Ma & Pa Blackcap Lady 845U
Scrotal	37.0		
ADG	4.24	Ma & Pa Shadow A627	Sinclair Shadow Rider 9S22
Dam's NR	3@96	Ma & Pa Blackbird 824F	Ma & Pa Ebon Eileenmere 627S
		Ox Bow Blackbird 290	Redland Emblazon 2134
			Ox Bow Blackbird 8176

EPDs	CED	BW	WW	YW	Milk	Marb	RE	Fat
	+11	-3.0	+41	+71	+24	+0.14	+0.54	-0.009

• 2 Pathfinder Dams in the pedigree.
Here's an extreme calving ease bull that can preform on feed. Gained 4.24 pounds per day. His grandam is the dam to lot 290. Safe for heifers.

Lot
842

Ma & Pa George K842

Reg No: 20614296

BD: 4/3/22

Act. BW	101	Sinclair Piney Creek 6FV11	Sinclair X-Changer 2FE9
Adj. WW	655	Ma & Pa George G163	Sinclair Eriskay 5E3 2N11
Ratio	106	Ma & Pa Blackcap Lady 163Y	Ma & Pa Documentary W645
Adj. YW	1207		Ma & Pa Blackcap Lady 845U
Scrotal	37.5		
ADG	5.13	Ma & Pa BEHOLD B537	Ma & Pa Handsom Jack W352
Dam's NR	2@102	Ma & Pa Erica 842F	Ma & Pa Eriskay 537R
		Ma & Pa Erica 451B	Sinclair Emperor 0XT8
			Ma & Pa Erica 662S

EPDs	CED	BW	WW	YW	Milk	Marb	RE	Fat
	+1	+3.6	+60	+114	+24	+0.62	+0.36	+0.026

• 3 Pathfinder Dams in the pedigree.
We kept a maternal brother to this bull last year and will use him again this year. Gained over 5 pounds a day.

Free Delivery on the bulls



Lot
852

Ma & Pa Fortitude K852

Reg No: 20614297

BD: 3/26/22

Act. BW	86
Adj. WW	633
Ratio	103
Adj. YW	1095
Scrotal	35.0
ADG	4.30

Mc Cumber Fortunate 415
Ma & Pa Fortitude G516
Ma & Pa Eriskay 516C

Sinclair Fortunate Son
Miss Wix 7126 of Mc Cumber
Ma & Pa Emblazon 9112
Ma & Pa Eriskay 147Y

Dam's NR	3@98
----------	------

Ma & Pa Shadow A627
Ma & Pa Blackcap 852F
Sinclair Blkcap 4G5 9XT0

Sinclair Shadow Rider 9522
Ma & Pa Ebon Eileenmere 6275
Sinclair Grass Master
Sinclair Blkcap 9XT0 2J92

EPDs	CED	BW	WW	YW	Milk	Marb	RE	Fat
	-2	+0.8	+51	+89	+30	+0.53	+0.35	+0.026

• 1 Pathfinder Dam in the pedigree.

One of the standouts at weaning time. His mama is the kind I wish I had a hundred of. A moderate framed eye-catcher that always weans a good one.



Lot
898

Ma & Pa George K898

Reg No: 20614298

BD: 4/1/22

Act. BW	99
Adj. WW	669
Ratio	108
Adj. YW	1117
Scrotal	35.0
ADG	4.17

Sinclair Piney Creek 6FV11
Ma & Pa George G163
Ma & Pa Blackcap Lady 163Y

Sinclair X-Changer 2FE9
Sinclair Eriskay 5E3 2N11
Ma & Pa Documentary W645
Ma & Pa Blackcap Lady 845U

Dam's NR	3@103
----------	-------

Sinclair Emperor 0XT8
Ma & Pa Bon Chloe 898F
Ma & Pa Bon Chloe 6112D

Sinclair Extra 4X13
Sinclair Blackbird 20F3 6417
Cole Creek 1100 Black 452
Ma & Pa Bon Chloe N334

EPDs	CED	BW	WW	YW	Milk	Marb	RE	Fat
	-9	+4.9	+60	+107	+19	+0.32	+0.18	+0.034

• 2 Pathfinder Dams in the pedigree.

Above average ratios in all categories on a correct 5.7 frame.



Lot
902

Ma & Pa George K902

Reg No: 20614299

BD: 3/25/22

Act. BW	81
Adj. WW	651
Ratio	106
Adj. YW	1041
Scrotal	36.0
ADG	3.64

Sinclair Piney Creek 6FV11
Ma & Pa George G163
Ma & Pa Blackcap Lady 163Y

Sinclair X-Changer 2FE9
Sinclair Eriskay 5E3 2N11
Ma & Pa Documentary W645
Ma & Pa Blackcap Lady 845U

Dam's NR	2@104
----------	-------

Ma & Pa Lumber Jack B543
Ma & Pa Miss Wix 902G
Ma & Pa Miss Wix 064X

Ma & Pa Handsom Jack W352
Ma & Pa Eileenmere 543R
Hero 6267 of R R 2418
Ma & Pa Miss Wix 834U

EPDs	CED	BW	WW	YW	Milk	Marb	RE	Fat
	+11	-1.7	+43	+70	+19	-0.03	+0.40	+0.009

• 4 Pathfinder Dams in the pedigree.

Calving ease bull that ratioed 106 at weaning. Safe for heifer.



Lot
927

Ma & Pa George K927

Reg No: 20614301

BD: 3/28/22

Act. BW	82
Adj. WW	739
Ratio	120
Adj. YW	1155
Scrotal	37.5
ADG	3.87

Sinclair Piney Creek 6FV11
Ma & Pa George G163
Ma & Pa Blackcap Lady 163Y

Sinclair X-Changer 2FE9
Sinclair Eriskay 5E3 2N11
Ma & Pa Documentary W645
Ma & Pa Blackcap Lady 845U

Dam's NR	2@114
----------	-------

Sinclair Warlord 4JJ4
Ma & Pa Blackbird 927G
Ma & Pa Blackbird 378A

Sinclair Emperor 0XT1
Sinclair Blkbird 7OC10 J472
Ma & Pa Handsom Jack W352
Ma & Pa Blackbird 968W

EPDs	CED	BW	WW	YW	Milk	Marb	RE	Fat
	+6	-0.7	+66	+118	+31	+0.24	+0.33	+0.027

• 2 Pathfinder Dams in the pedigree.

The biggest EPD spread bull in the offering! Biggest weaning weight too! The 41J4 cows have been consistently good. His excellent uddered dam is off to a great start with 2/114 weaning ratio. Safe for heifers.





Lot 932 **Ma & Pa Tank K932** Reg No: 20614302 BD: 4/8/22

Act. BW	95	Sinclair Piney Creek 6FV11	Sinclair X-Changer 2FE9
Adj. WW	714	Ma & Pa Tank F650	Sinclair Eriskay 5E3 2N11
Ratio	116	Ma & Pa Miss Wix 650S	O C C Great Plains 943G
Adj. YW	1175		Ma & Pa Miss Wix 455P
Scrotal	32.0		
ADG	4.28	Ma & Pa Executive Order D470	Sinclair Executive 9XV3
Dam's NR	2@112	Ma & Pa Eileenmere 932G	Ma & Pa Miss 470B
		Ma & Pa Eileenmere 413B	S Game Day 0218
			Ma & Pa Eileenmere 124Y

EPDs	CED	BW	WW	YW	Milk	Marb	RE	Fat
	+2	+1.8	+60	+105	+29	+0.50	+0.21	+0.042

• 1 Pathfinder Dam in the pedigree.
Explosive growth bull with a weaning ratio of 116. His dam is on her way to Pathfinder status with 2/112 and is nursing an early born Feature Presentation bull calf.

Lot 942 **Ma & Pa George K942** Reg No: 20614303 BD: 3/31/22

Act. BW	81	Sinclair Piney Creek 6FV11	Sinclair X-Changer 2FE9
Adj. WW	650	Ma & Pa George G163	Sinclair Eriskay 5E3 2N11
Ratio	105	Ma & Pa Blackcap Lady 163Y	Ma & Pa Documentary W645
Adj. YW	1124		Ma & Pa Blackcap Lady 845U
Scrotal	36.5		
ADG	4.41	Sinclair Emulation 4FX1	Sinclair Emulation 0F4
Dam's NR	2@103	Ma & Pa Bandolier 942G	Sinclair M Emulous 4ET1 D47
		Ma & Pa Bandolier 503C	Sinclair Emperor 0XT8
			Ma & Pa Bandolier 022X

EPDs	CED	BW	WW	YW	Milk	Marb	RE	Fat
	+7	-0.7	+49	+94	+25	+0.40	+0.39	+0.031

• 4 Pathfinder Dams in the pedigree.
A gentle George son that should work well on heifers. His dam is by a calving ease sire that was the top selling bull of the 2015 Sinclair Angus Bull Sale. Safe for heifers.

Lot
947

Ma & Pa Fortitude K947

Reg No: 20614304

BD: 3/23/22

Act. BW	84
Adj. WW	605
Ratio	98
Adj. YW	1034
Scrotal	35.5
ADG	3.99

Mc Cumber Fortunate 415
Ma & Pa Fortitude G516
Ma & Pa Eriskay 516C

Sinclair Fortunate Son
Miss Wix 7126 of Mc Cumber
Ma & Pa Emblazon 9112
Ma & Pa Eriskay 147Y

Dam's NR	1@98
----------	------

Sinclair Piney Creek 6FV11
Ma & Pa Lady Ida 947G
Ma & Pa Lady Ida 533C

Sinclair X-Changer 2FE9
Sinclair Eriskay 5E3 2N11
Ma & Pa X654 Sequal A353
Sinclair Lady Ida 3V18 0JP29

EPDs	CED	BW	WW	YW	Milk	Marb	RE	Fat
	+6	+0.4	+47	+83	+27	+0.39	+0.07	+0.055

• 2 Pathfinder Dams in the pedigree.
Numbers can be confusing at times, but I know this bull would work fine on my own heifers. Dam is a gentle, sweet thing.



Lot
959

Ma & Pa Fortitude K959

Reg No: 20614305

BD: 4/3/22

Act. BW	84
Adj. WW	622
Ratio	101
Adj. YW	1072
Scrotal	33.0
ADG	4.19

Mc Cumber Fortunate 415
Ma & Pa Fortitude G516
Ma & Pa Eriskay 516C

Sinclair Fortunate Son
Miss Wix 7126 of Mc Cumber
Ma & Pa Emblazon 9112
Ma & Pa Eriskay 147Y

Dam's NR	2@100
----------	-------

Sinclair Emulation 4FX1
Ma & Pa Enchantress 959G
Ma & Pa Enchantress 613D

Sinclair Emulation 0F4
Sinclair M Emulous 4ET1 D47
Cole Creek 1100 Black 452
Ma & Pa Enchantress 132Y

EPDs	CED	BW	WW	YW	Milk	Marb	RE	Fat
	+5	+0.2	+41	+78	+31	+0.54	+0.30	+0.033

• 2 Pathfinder Dams in the pedigree.
An attractive tight-sheathed son of Fortitude that measures a 6 frame score.



Lot
970

Ma & Pa George K970

Reg No: 20614306

BD: 4/17/22

Act. BW	91
Adj. WW	713
Ratio	116
Adj. YW	1159
Scrotal	36.5
ADG	4.16

Sinclair Piney Creek 6FV11
Ma & Pa George G163
Ma & Pa Blackcap Lady 163Y

Sinclair X-Changer 2FE9
Sinclair Eriskay 5E3 2N11
Ma & Pa Documentary W645
Ma & Pa Blackcap Lady 845U

Dam's NR	2@102
----------	-------

Sinclair Emulation 4FX1
Ma & Pa Lassie 970G
Ma & Pa Lassie 6101D

Sinclair Emulation 0F4
Sinclair M Emulous 4ET1 D47
Cole Creek 1100 Black 452
Ma & Pa Lassie 861U

EPDs	CED	BW	WW	YW	Milk	Marb	RE	Fat
	-1	+1.3	+61	+112	+25	+0.47	+0.10	+0.048

• 3 Pathfinder Dams in the pedigree.
Some great growth ratios wrapped in a complete package.





Lot 978

Ma & Pa Tank K978

Reg No: 20614307

BD: 4/8/22

Act. BW	100	Sinclair Piney Creek 6FV11	Sinclair X-Changer 2FE9
Adj. WW	682	Ma & Pa Tank F650	Sinclair Eriskay 5E3 2N11
Ratio	111	Ma & Pa Miss Wix 650S	O C C Great Plains 943G
Adj. YW	1103		Ma & Pa Miss Wix 455P
Scrotal	34.5		
ADG	3.92	Sinclair Warlord 4IJ4	Sinclair Emperor 0XT1
Dam's NR	2@108	Ma & Pa Erica 978G	Sinclair Blkbird 7OC10 J472
		Ma & Pa Erica 711E	Sinclair Emulation 4FX1
			Ma & Pa Erica 131Y

EPDs	CED	BW	WW	YW	Milk	Marb	RE	Fat
	+1	+1.9	+54	+97	+38	+0.36	+0.40	+0.013

• 2 Pathfinder Dams in the pedigree.
Really nice bull with potential to make some great females.
Dam is heading to Pathfinder status - she was one of the first to calve again this Spring.



Lot 0103

Ma & Pa Warlord K0103

Reg No: 20614269

BD: 3/8/22

Act. BW	73	Sinclair Emperor 0XT1	Sinclair Extra 4X13
Adj. WW	571	Sinclair Warlord 4IJ4	Sinclair Ruth 8A1 A78
Ratio	98	Sinclair Blkbird 7OC10 J472	O C C Great Plains 943G
Adj. YW	977		N Bar Blackbird C349
Scrotal	33.5		
ADG	3.73	LAR Onward 974F	Coleman Onward 511
Dam's NR	1@98	Ma & Pa Blackbird 0103H	Blackbird Lass 958D 974 LAR
		Ma & Pa Blackbird 813F	Sinclair Warlord 4IJ4
			Ma & Pa Blackbird 209Z

EPDs	CED	BW	WW	YW	Milk	Marb	RE	Fat
	+10	+0.2	+52	+91	+32	+0.70	+0.40	+0.079

• 1 Pathfinder Dam in the pedigree.
Sinclair Warlord 4IJ4 is not only a calving ease sire, but has also produced some of our favorite females. Safe for heifers.



Lot 0108

Ma & Pa Onward K0108

Reg No: 20614271

BD: 3/26/22

Act. BW	64	LAR Onward 974F	Coleman Onward 511
Adj. WW	579	Ma & Pa Onward H848	Blackbird Lass 958D 974 LAR
Ratio	99	Ma & Pa Blackbird 848F	Sinclair Warlord 4IJ4
Adj. YW	1021		Ma & Pa Blackbird 463B
Scrotal	35.0		
ADG	4.11	LAR Steadfast 699	Mc Cumber Steadfast 635
Dam's NR	1@99	Ma & Pa Blackbird 0108H	Eileenmere Elba 916X LAR
		Ma & Pa Blackbird 831F	Ma & Pa Executive Order D470
			Ma & Pa Blackbird 346A

EPDs	CED	BW	WW	YW	Milk	Marb	RE	Fat
	+4	-0.7	+49	+81	+29	+0.57	+0.62	+0.019

• 2 Pathfinder Dams in the pedigree.
Safe for heifers.



Lot 1101

Ma & Pa Tank K1101

Reg No: 626876320

BD: 3/31/22

Act. BW	77	Ma & Pa Tank F650	Sinclair Piney Creek 6FV11
Adj. WW	658	Ma & Pa Tank H859	Ma & Pa Miss Wix 650S
Ratio	111	Ma & Pa Blackcap Lady 859F	Sinclair Emulation 4FX1
Adj. YW	1018		Ma & Pa Blackcap Lady 517C
Scrotal	34.0		
ADG	3.35	Ma & Pa Steak Maker 9452	HA Magic Maker 4300
Dam's NR	10@98	Ma & Pa 1101	Ma & Pa Queen 452P
		Ma & Pa 587	OCC Great Plains 943G
			Ma & Pa 701

EPDs	CED	BW	WW	YW	Milk	Marb	RE	Fat
	-	-	-	-	-	-	-	-

• 2 Pathfinder Dams in the pedigree.
Eleven year old cow has a 77 pound bull calf then weans him at 658 pounds on grass and milk....Safe for heifers.

Lot
3110

Ma & Pa Black Cedar K3110

Reg No: 626876315

BD: 3/30/22

Act. BW	78	Ma & Pa Black Cedar D902	Cole Creek 1100 Black 452					
Adj. WW	569	Ma & Pa Black Cedar G650	Ma & Pa Blackbird 902W					
Ratio	96	Ma & Pa Miss Wix 650S	O C C Great Plains 943G					
Adj. YW	1003		Ma & Pa Miss Wix 455P					
Scrotal	34.0							
ADG	4.03	Ma & Pa Sequal X654	Ma & Pa Sequal R299					
Dam's NR	8@100	Ma & Pa 3110	Ma & Pa Merle 654S					
		Ma & Pa 582	OCC Emblazon 854E					
			Ma & Pa 378					
EPDs	CED	BW	WW	YW	Milk	Marb	RE	Fat
	-	-	-	-	-	-	-	-

• 1 Pathfinder Dam in the pedigree.
Out of a nine year old cow with an unblemished record. Safe for heifers.



Lot
6112

Ma & Pa George K6112

Reg No: 20614315

BD: 4/5/22

Act. BW	90	Sinclair Piney Creek 6FV11	Sinclair X-Changer 2FE9					
Adj. WW	682	Ma & Pa George G163	Sinclair Eriskay 5E3 2N11					
Ratio	111	Ma & Pa Blackcap Lady 163Y	Ma & Pa Documentary W645					
Adj. YW	1063		Ma & Pa Blackcap Lady 845U					
Scrotal	39.0							
ADG	3.54	Cole Creek 1100 Black 452	Cole Creek Black Cedar 1100					
Dam's NR	5@97	Ma & Pa Bon Chloe 6112D	Cole Creek Juanadacap 50U					
		Ma & Pa Bon Chloe N334	B C C Bushwacker 41-93					
			C H Bon Chloe 8309					
EPDs	CED	BW	WW	YW	Milk	Marb	RE	Fat
	+3	+0.1	+49	+75	+23	+0.28	+0.37	+0.010

• 2 Pathfinder Dams in the pedigree.
Tight sheathed, big scrotal son of George.



Lot
6599

Ma & Pa Black Cedar K6599

Reg No: 20614316

BD: 4/4/22

Act. BW	110	Ma & Pa Black Cedar D902	Cole Creek 1100 Black 452					
Adj. WW	659	Ma & Pa Black Cedar G650	Ma & Pa Blackbird 902W					
Ratio	107	Ma & Pa Miss Wix 650S	O C C Great Plains 943G					
Adj. YW	1085		Ma & Pa Miss Wix 455P					
Scrotal	36.0							
ADG	3.95	LAR Rainmaker 127 773B	Sitz Rainmaker 11127					
Dam's NR	5@112	Eileenmere Diamond 593D LAR	Queen Elba 793U LAR					
		Eileenmere Diamond 893W LAR	B C Matrix 4132					
			Eileenmere Diamond 735P LAR					
EPDs	CED	BW	WW	YW	Milk	Marb	RE	Fat
	-2	+3.8	+62	+109	+35	+0.42	+0.32	+0.068

• 2 Pathfinder Dams in the pedigree.
Check out his dam's nursing ratio. She was our selection of the Pick-of-the-Herd heifer calves at Littau Angus. Loads of power.



**Free Delivery
on the bulls**



Lot
7109

Ma & Pa Tank K7109

Reg No: 20614312

BD: 4/3/22

Act. BW	112	Sinclair Piney Creek 6FV11	Sinclair X-Changer 2FE9					
Adj. WW	625	Ma & Pa Tank F650	Sinclair Eriskay 5E3 2N11					
Ratio	100	Ma & Pa Miss Wix 650S	O C C Great Plains 943G					
Adj. YW	1036		Ma & Pa Miss Wix 455P					
Scrotal	36.0							
ADG	3.83	Ma & Pa Lumber Jack B543	Ma & Pa Handsom Jack W352					
Dam's NR	4@112	Ma & Pa Lassie 7109E	Ma & Pa Eileenmere 543R					
		Ma & Pa Lassie 861U	O C C Emblazon 854E					
			Ma & Pa Lassie 652S					
EPDs	CED	BW	WW	YW	Milk	Marb	RE	Fat
	+1	+2.7	+46	+70	+33	+0.59	-0.12	+0.022

• 3 Pathfinder Dams in the pedigree.
Pathfinder dam behind this brute.





Lot
7116

Ma & Pa Tank K7116

Reg No: 20614313

BD: 4/8/22

Act. BW	86
Adj. WW	662
Ratio	107
Adj. YW	1121
Scrotal	36.0
ADG	4.27

Sinclair Piney Creek 6FV11
Ma & Pa Tank F650
Ma & Pa Miss Wix 650S
Deep Creek Revolution 417

Sinclair X-Changer 2FE9
Sinclair Eriskay 5E3 2N11
O C C Great Plains 943G
Ma & Pa Miss Wix 455P

Dam's NR
4@106

Ma & Pa Blackbird 7116E
Ma & Pa Blackbird 976W

Connealy Reflection
Deep Creek MaPa Lass 617
Sitz Alliance 6595
Blackbird Lassie 319H L A R

EPDs	CED	BW	WW	YW	Milk	Marb	RE	Fat
	+9	-1.4	+36	+60	+39	+0.77	-0.08	+0.042

• 2 Pathfinder Dams in the pedigree.
Really nice, long-made heifer bull. Dam is Pathfinder. Safe for heifers.



Lot
8108

Ma & Pa Fact Check K8108

Reg No: 20614314

BD: 3/22/22

Act. BW	83
Adj. WW	585
Ratio	95
Adj. YW	1099
Scrotal	36.5
ADG	4.78

Deep Creek Revolution 417
Ma & Pa Fact Check H517
Ma & Pa Blackcap Lady 517C

Connealy Reflection
Deep Creek MaPa Lass 617
Sinclair Shadow Rider 9S22
Ma & Pa Blackcap Lady 163Y

Dam's NR
3@98

Ma & Pa Eileenmere 8108F
Ma & Pa Eileenmere 842U

Connealy Reflection
Deep Creek MaPa Lass 617
HA Magic Maker 4300
Ma & Pa Eileenmere 543R

EPDs	CED	BW	WW	YW	Milk	Marb	RE	Fat
	+9	+0.2	+44	+86	+31	+0.39	+0.53	+0.017

• 4 Pathfinder Dams in the pedigree.
Heifer bull that gained well on feed test. Safe for heifers.



Notes



Driving the science of better breeding

There's little room for error in the cattle business. Producers need the most advanced information to make smart selection decisions, and Angus Genetics Inc. (AGI) provides it through genomic-enhanced expected progeny differences (GE-EPDs).

EPDs that traditionally contained all pedigree, performance and progeny information now also include results from available genomic, or DNA, tests. Breeders who use genomic technology give buyers access to AGI-generated GE-EPDs that provide:

- increased predictability and decreased risk for young and unproven animals due to enhanced accuracy of EPDs
- Better characterization of genetics for difficult-to-measure performance traits (such as carcass traits, maternal traits and feed efficiency)
- The ability to make more rapid progress for traits that are important to you, due to:
 - more accurate selection
 - easier identification of genetic outliers
 - the ability to propagate young animals with confidence earlier in their lives

In fact, GE-EPDs on unproven animals have the same amount of accuracy as if they had recorded 8-33 calves, depending on the trait. That's valuable insight, offered regularly through the breed's weekly national cattle evaluation at www.angus.org.

How do you know if EPDs are genomic-enhanced?

Ask your breeder, refer to the registration paper, or look for the AGI GE-EPD logo, Angus GS™ powered by partner Neogen GeneSeek or the HD50k or i50k by partner Zoetis.





Steve & Deb Mowry
25340 River Road
Presho, SD 57568



Address Service Requested

